

Meal Times in the Echo's Dining Room

Breakfast

Buffet 8:00 - 10:00 a.m.

Lunch

12:00 - 1:00 p.m.

Dinner

Tuesday and Thursday

Family 5:30 p.m.

Adult 6:30 p.m.

All Other Evenings 5:30 - 7:00 p.m.

Children's Snack

Crusader Lounge 8:15 p.m. Nightly

CHILDRENS PROGRAMS

Supervised activities are available at specified times.

Ages 3 – 7 years old: Meet in the Glyde Hall

Ages 8 – 12 years old: Meet in Cedar Room

Echo's Lounge

Enjoy cocktails, specialty coffees, & liqueurs in our licensed lounge. The Echo's Lounge is open from five o'clock onwards every evening featuring activities, music & entertainment on specified nights.

The Crusader Lounge

Is a cozy room with a fireplace and a TV for your viewing enjoyment. sports, news, entertainment – just ask the staff to program the channel of your choice.

Massage Therapist

Use your time at Bayview to enjoy a relaxing massage from our Registered Massage Therapist. See the front desk for further information or dial "0" to book your appointment.

Spa Services

We now offer a wide range of spa services from pedicures and manicures to facials and wraps. Please speak with one of our front desk agents to book your appointment.

Board Games and Movies

The Front desk will provide your entire family with games to play in the Crusader Lounge by the fireplace or in the comfort of your own accommodation. Complimentary videos can be viewed on Bayview's movie network in all accommodations throughout your stay.

The Cottages at Port Stanton II

Provides a new style of cottage ownership that gives you high quality, affordability and a more convenient option of vacationing. Ask one of our guest services agents for more details.

For those interested in using our Wi-Fi network
the password is : Sparrow2012
(Please note for the Bayview Wildwood Resort network)



BAYVIEW WILDWOOD

RESORT

A lakefront resort and cottage community

2012 March Break



Lakeshore House Recreational Facilities

Open 8:00 a.m. . 10:00 p.m. Daily

Pool	Billiards	Exercise room
Hot tub	Table tennis	Squash courts
Air Hockey	Indoor Shuffleboard	Foosball

*Change rooms are located in the Lakeshore House.
Towels and equipment are available at the Front Desk.*

Winter Ski Shop

Open 9:00 a.m. . 5:00 p.m. Daily

All your winter sporting equipment needs can be found in our outfitting depot. Equipment is provided free of charge for two hours a day for all of the following activities. Late & damage fees will be charged to room.

If you would like to do some night skating please sign out skates before 5:00 p.m. that day and return them to the Recreation Center the next day.

Snow - Shoeing. Two scenic trails provide the perfect opportunity to enjoy this fun and easy winter activity.

Cross - Country Skiing. Miles of well-groomed trails are available for participants of varying level of skill and fitness.

Ice Skating. Our cleared and lighted area is a perfect venue for outdoor skating on this picturesque lake during the day or evening.

Broomball. Play this fun winter sport at your leisure or we will help you organize a group for some low competition play.

Tobogganing. Many levels of hills can be found in walking distance.

Friday March 9th

8:00 pm

Front of ski skop

Campfire Social

Come on down to the ski - shop and get warm by the fire. Have a hot chocolate, roast some marshmallows and socialize with some of the other guests. The ice rink will be lit up so if you want to go for a skate you can do so.

9:00 pm

Echos Lounge

Winter Warm ups

After the campfire come on up to Echo's Lounge for some light music and ask one of our bartenders about the variety of specialty coffees available as well as some winter specials.

Saturday March 10th

9:00 a.m. - 5:00 p.m.

Ski Shop Open...come and enjoy some outdoor fun.

9:30 a.m. - 12:00 p.m.

Designated Areas

Supervised Children's Program

Ages 3 - 7, 8 -12

9:45 a.m.

Front of Inn

Frosty Frolic

Join one of our recreation staff for an invigorating walk around the property to get some more information about the facilities and history of the resort.

10:30 a.m.

Glympse

Qi Gong for Relaxation

Join Jack in this ancient Chinese healing modality, which is a gentle exercise that will get your day off to a great start. It's a great way to experience some light exercise and peaceful meditation.

11:00 - 12:00 p.m.

Echo's Lounge

Euchre/ Texas Hold em tournament

Some people like euchre and others like poker. Well this gives you a chance to play your own game. We will have prizes for the winner of each event.

1:30 - 3:00 p.m.

Horse Drawn Wagon Rides

Rides leave every 20 minutes from the front of the main inn.

1:30 - 2:30 p.m.

Basketball Court

Family Broomball

Its like hockey except no skates, and instead of a puck it's a ball and instead of a stick it's a broom. Okay so it's nothing like hockey but it's still fun.

2:45 - 3:45 p.m.

Glympse

Family Minute To Win It Challenge

You have seen the television show. Think you have what it takes to win these challenges in only one minute? Get out there and see if you can beat the clock.

4:00 p.m.

Glympse Room

Teddy Bear Workshop

Our recreation staff will help you build your very own teddy bear to take home. **Don't forget** We have Bayview T-shirts and sports outfits available for your bears this year. Please inquire about these during the class. Cost is \$20.00 per bear plus HST, clothing extra. Please sign up at the Front Desk by 3:00 p.m.

6:30 - 8:30 p.m.

Designated Areas

Supervised Children's Program

Ages 3 - 7 and 8 - 12

9:00 p.m.

Echo's Lounge

Jamie Williams

The definition of 'one-man-band'. Jamie plays a large variety of music and instruments, whether you just want to watch or get up and dance be sure not to miss this one.



Saturday March 16th

9:00 a.m. - 5:00 p.m.

Ski Shop Open...enjoy some outdoor fun!

9:30 a.m. - 12:00 p.m.

Designated Areas

Supervised Children's Program

Ages 3 - 7, 8 -12

9:45 a.m.

Front of Inn

Frosty Frolic

Join one of our recreation staff for an invigorating walk around the bypass for the resort and help to work off some of those buffet calories.

11:00 - 12:00 p.m.

Echo's Lounge

Euchre/ Texas Hold em tournament

Some people like euchre and others like poker. Well this gives you a chance to play your own game. We will have prizes for the winner of each event.

1:30 - 3:00 p.m.

Horse Drawn Wagon Rides

Rides leave every 20 minutes from the front of the main inn.

1:30 - 2:30 p.m.

Basketball Court

Family Broomball

Its like hockey except no skates, and instead of a puck it's a ball and instead of a stick it's a broom. Okay so it's nothing like hockey but it's still fun.

2:00 p.m.

Ski Shop

Skating Party

Strap on a pair of skates and take part in our skating party. We will have a free skate on the ice and for those who want more of a challenge come and take part in our Ice Rink Olympics. We will have a fire going with marshmallows for roasting and of course hot chocolate.

3:00 - 4:00 p.m.

Glympse

Family Minute To Win It Challenge

You have seen the television show. Think you have what it takes to win these challenges in only one minute? Get out there and see if you can beat the clock.

4:00 p.m.

Glympse Room

Teddy Bear Workshop

Our recreation staff will help you build your very own teddy bear to take home. **Don't forget** We have Bayview T-shirts and sports outfits available for your bears this year. Please inquire about these during the class. Cost is \$20.00 per bear plus HST, clothing extra. Please sign up at the Front Desk by 3:00 p.m.

4:30 p.m.

Echo's Lounge

Martini Madness Seminar (Adult)

Warm up in Echo's Lounge while learning how to make, (and taste), some wonderful martinis. Cost is \$12/person. Please sign up at the Front Desk by 3:00 p.m.

6:30 - 8:30 p.m.

Designated Areas

Supervised Children's Program

Ages 3 - 7 and 8 - 12

Campfire Night! Enjoy some sing along songs while you roast some marshmallows.

7:30 p.m.

Ski Shop

Family Campfire

Get together with fellow guests and the recreation staff to enjoy a cozy fire while singing songs and roasting marshmallows.

9:00 p.m.

Echo's Lounge

Jamie Williams

The definition of 'one-man-band'. Jamie plays a large variety of music and instruments, whether you just want to watch or get up and dance be sure not to miss this one.



Friday March 15th

9:00 a.m. - 5:00 p.m. Ski Shop Open...enjoy some outdoor fun!

9:30 a.m. - 12:00 p.m. Supervised Children's Program
Designated Areas Ages 3 - 7, 8 - 12

9:45 a.m. Guided Snowshoe Hike
Ski Shop
For some of you it might be your last chance to head out on the trails before you leave. Meet one of our recreation staff members in the Ski Shop, strap on a pair of snowshoes and let's have some fun.

11:00 a.m. Pictionary Madness
Glympse
Remember Pictionary? It's not a comeback because it's been here for years. Basically we put you into teams each person gets a chance to draw something and the other guess what it is. Sounds easy and way too much fun.

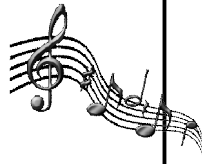
1:30 - 2:30 p.m. Rock & Roll Jeopardy
Glympse
test
For all of you music lovers out there put your knowledge to the in a rockin' version jeopardy.

3:00 p.m. Bayview's Wild and Amazing Race
Ski Shop
Put a team together or we will find you one and come down to the ski shop where you will find your first clue. After that you will have follow the clues to different locations around the resort as well as complete certain challenges to be declared the winner and reigning champion. That comes with bragging rights!

4:00 p.m. Family Karaoke
Cedar Room
Over 65,000 songs to choose from. The newest pop hits for the kids and some of the most popular classics for the mom's and dad's. Sure to be fun for the whole family.

6:30-8:30 p.m. Supervised Children's Program
Designated Areas Ages 3 - 7 and 8 - 12

8:30 pm Craig Douglas
Echo's Lounge
This family show features the comedic juggling and improvisation of Mr. Craig Douglas. This is a fantastic show for the entire family that will leave you bursting with laughter and wanting more!



Kickoff to March Break!!!

Sunday, March 11
9:00 a.m. - 5:00 p.m.

9:30 a.m. - 12:00 p.m. Supervised Children's Program
Designated Areas Ages 3 - 7, 8 - 12

9:45 pm Guided Snowshoe Hike
Ski Shop

11:00 a.m. Family Feud
Glympse Room
Come on down and do the feud. Bring the whole family down and test out your knowledge and our version of the classic game.

1:30 - 2:30 p.m. Bayview Winterish Games
Ski Shop
Put a team together and come and participate in a series of winterish games. We will test your endurance, knowledge and team-working skills in this series of fun and enjoyable winter activities.

3:00 p.m. Family Icebreakers: Party on the Lake
Lake by Ski Shop
Come down to the ski shop and enjoy a warm fire, hot chocolate and games on the lake. Try practicing curling on our short rink (weather permitting) or we can start a game of hockey or broomball.

4:00 p.m. Candy Bar Bingo
Glympse Room
Meet one of our recreation staff members down at in the Glympse Room for a good old fashioned game of BINGO. I hear the prizes are pretty sweet.

6:30-8:30 p.m. Supervised Children's Program
Designated Areas Ages 3 - 7 and 8 - 12
Campfire Night! Enjoy some sing along songs while you roast some marshmallows.

9:00 p.m. DJ Dance/Karaoke Night
Echo's Lounge
Join us for a night of dancing and singing in the Echo's Lounge. We have all the latest music as well as a 65,000 Karaoke songs to choose from. So whether you feel like getting up and dancing or singing it should be lot's of fun.



Monday March 12th

- 9:00 a.m. - 5:00 p.m. **Ski Shop Open...come and enjoy some outdoor fun.**
- 9:30 a.m. - 12:00 p.m. **Supervised Children's Program**
Designated Areas Ages 3 -7, 8 -12
- 9:45 a.m. **Cross Country Ski Clinic**
Ski Shop
your
For those of you who always wanted to learn how to cross country ski now is chance. Meet one of our recreation staff members for a free introductory lesson on the basics of cross country skiing. This lesson for people of all ages and will be educational as well as lot's of fun.
- 11:00 a.m. **Pictionary Madness**
Glympse
Remember Pictionary? It's not a comeback because it's been here for years. Basically we put you into teams each person gets a chance to draw something and the other guess what it is. Sounds easy and way too much fun.
- 1:30 - 2:30 p.m. **Family Broomball**
Basketball Court
Just in case you didn't make it out to our game on Saturday here is another chance. If you were there on Saturday, well...you can never get enough broomball.
- 3:00 p.m. **Bayview's Wild and Amazing Race**
Ski Shop
Put a team together or we will find you one and come down to the ski shop where you will find your first clue. After that you will have follow the clues to different locations around the resort as well as complete certain challenges to be declared the winner and reigning champion. That comes with bragging rights!
- 4:00 - 5:00 p.m. **Chris Pilsworth's Magic Workshop**
Cedar Room
Join magician Chris Pilsworth in a workshop designed to give you some insight into the world of magic. He will show you some of the tricks of the trade but not to much because he still wants to keep his job.
- 4:30 p.m. **Martini Madness Seminar (Adult)** Warm up in Echo's Lounge while learning how to make, (and taste), some wonderful martinis. Cost is \$12/person. Please sign up at the Front Desk by 3:00 p.m.
- 6:30-8:30 p.m. **Supervised Children's Program**
Designated Areas Ages 3 -7 and 8 -12
- 8:45 p.m. **Chris Pilsworth's Family Magic Show**
Echo's Lounge
We hope you enjoyed the workshop, now you can see Chris doing what he does best. Enjoy this fun and entertaining show for the whole family. The kids will definitely love this one!



Thursday March 15th

- 9:00 a.m. - 5:00 p.m. **Ski Shop Open...enjoy some outdoor fun!**
- 9:30 a.m. - 12:00 p.m. **Supervised Children's Program**
Designated Areas Ages 3 -7, 8 -12
- 9:45 a.m. **Frosty Frolic**
Front of Inn
Join one of our recreation staff for an invigorating walk around the bypass for the resort and help to work off some of those buffet calories.
- 10:30 a.m. **Qi Gong for Relaxation**
Glympse
that
Join Jack in this ancient Chinese healing modality, which is a gentle exercise will get your day off to a great start. It's a great way to experience some light exercise and peaceful meditation.
- 11:00 a.m. **Candy Bar Bingo**
Glympse Room
Meet one of our recreation staff members down at in the Glympse Room for a good old fashioned game of BINGO. I hear the prizes are pretty sweet.
- 1:30 - 3:00 p.m. **Horse Drawn Wagon Rides**
Rides leave every 20 minutes from the front of the main inn.
- 1:30 - 2:30 p.m. **Family Broomball**
Basketball Court
Its like hockey except no skates, and instead of a puck it's a ball and instead of a stick it's a broom. Okay so it's nothing like hockey but it's still fun.
- 2:45 - 3:45 p.m. **Winter Volleyball**
Baseball Diamond
Your eyes are not deceiving you, we are going to play volleyball outside at the end of December. The question is, are you ready for this much fun?
- 4:00 p.m. **Family Icebreakers: Party on the Lake**
Lake by Ski Shop
Come down to the ski shop and enjoy a warm fire, hot chocolate and games on the lake. Try practicing curling on our short rink (weather permitting) or we can start a game of hockey or broomball.
- 6:30-8:30 p.m. **Supervised Children's Program**
Designated Areas Ages 3 -7 and 8 -12
Campfire Night! Enjoy some sing along songs while you roast some marshmallows.
- 7:30 p.m. **Family Campfire**
Ski Shop
Get together with fellow guests and the recreation staff to enjoy a cozy fire while singing songs and roasting marshmallows.
- 8:30 pm **Jim Cronk - Its Thursday Night Time To Cronk It Up**
Echo's Lounge
Jim is a local favourite back to entertain adults and children alike. Jim knows a variety of music and enjoys getting the audience involved.



Wednesday March 14th

- 9:00 a.m. - 5:00 p.m. **Ski Shop Open...enjoy some outdoor fun!**
- 9:30 a.m. - 12:00 p.m. **Supervised Children's Program**
Designated Areas
Ages 3 - 7, 8 - 12
- 9:45 a.m. **Guided Snowshoe Hike**
Ski Shop
Join one of our recreation staff on guided hike through one of our beautiful nature trails on snowshoes. Make sure you ask lot's of questions and try to stump the staff member.
- 11:00 a.m. **Family Feud**
Glympse Room
Come on down and do the feud. Bring the whole family down and test out your knowledge and our version of the classic game.
- 1:30 - 2:30 p.m. **Bayview Winterish Games**
Ski Shop
Put a team together and come and participate in a series of winterish games. We will test your endurance, knowledge and team-working skills in this series of fun and enjoyable winter activities.
- 3:00 - 4:00 p.m. **Flag Football Game**
Front of Main Inn Meet our recreation staff in front of the main inn to try this game out in the snow. This is a non contact sport so don't be shy to come out and give it a try.
- 4:00 p.m. **Cross Country Ski Clinic**
Ski Shop
For those of you who always wanted to learn how to cross country ski now is your chance. Meet one of our recreation staff members for a free introductory lesson on the basics of cross country skiing. This lesson for people of all ages and will be educational as well as lot's of fun. If you were there for the first clinic come back and learn some more.
- 4:30 p.m. **Winter Warm Ups (Adult)**
Echo's Lounge
Warm up in Echo's Lounge while learning how to make some wonderful warm specialty coffees. Yes, you get to drink them too! Cost is \$12/per person. Please sign up at the Front Desk as space is limited.
- 6:30-8:30 p.m. **Supervised Children's Program**
Designated Areas
Ages 3 - 7 and 8 - 12
- 7:30 p.m. **Jam Sandwich**
Cedar Room
This great family show will have you in stitches as well as singing along with all the great music.
- 9:00 p.m. **Erinz Fire**
Echo's Lounge
New to Bayview Wildwood, this band has a wide variety of music and sure to be fun for everyone.



Tuesday March 13th

- 9:00 am - 5:00 p.m. **Ski Shop Open...enjoy some outdoor fun!**
- 9:30 am - 12:00 p.m. **Supervised Children's Program**
Designated Areas
Ages 3 - 7, 8 - 12
- 9:45 a.m. **Frosty Frolic**
Front of Inn
Join one of our recreation staff for an invigorating walk around the bypass for the resort and help to work off some of those buffet calories.
- 11:00 - 12:00 p.m. **Euchre/ Texas Hold em tournament**
Echo's Lounge
Some people like euchre and others like poker. Well this gives you a chance to play your own game. We will have prizes for the winner of each event.
- 1:30 - 3:00 p.m. **Horse Drawn Wagon Rides**
Rides leave every 20 minutes from the front of the main inn.
- 2:00 p.m. **Skating Party**
Ski Shop
Strap on a pair of skates and take part in our skating party. We will have a free skate on the ice and for those who want more of a challenge come and take part in our Ice Rink Olympics. We will have a fire going with marshmallows for roasting and of course hot chocolate.
- 3:00 - 4:00 p.m. **Family Minute To Win It Challenge**
Glympse
You have seen the television show. Think you have what it takes to win these challenges in only one minute? Get out there and see if you can beat the clock.
- 4:00 p.m. **Teddy Bear Workshop**
Glympse Room
Our recreation staff will help you build your very own teddy bear to take home. **Don't forget** We have Bayview T-shirts and sports outfits available for your bears this year. Please inquire about these during the class. Cost is \$20.00 per plus HST, clothing extra. Please sign up at the Front Desk by 3:00 p.m.
- 6:30-8:30 p.m. **Supervised Children's Program**
Designated Areas
Ages 3 - 7 and 8 - 12
- 7:00 p.m. **Zootek**
Cedar room
Come and check out this interactive animal show which bodes to be fun for the whole family. They will have a variety of animals which you get up close and personal and you might learn something as well.
- 9:00 p.m. **Casino Night**
Echo's Lounge
Come out and enjoy a night of gambling (for fun). We give you \$200.00 in chips to start with, then it is up to you to make as much money as you can before the auction which takes place at 11:00p.m. and there are some great prizes. There will be Blackjack, Texas Hold Em and Crown and Anchor. This event is for adults only (18 +).



More Bayview Information

Morning announcements will be held in the **Echo's Dining Room at 9:00** am each morning. During this time any changes or updates to the schedule will be announced as well as any of the winners from our events or competitions from the day before.

When dropping your children off in the supervised programs please be sure to bring their outdoor winter clothes and sign in with the camp counselors.

Snowmobile Safaris will be available if weather and trail conditions allow. Please speak to the Front Desk staff to book you machine. Please note that there is an additional charge for this activity.

We hope you enjoy your stay and make sure to get out there and have some fun!!

Ski Shop

Our ski shop is open from 9am until 5pm daily. It is located on the lakeside of the Main Inn. Please see our ski shop attendants for snowshoes, skis and toboggans. The ski shop availability will be weather dependent.

